



INTERNATIONAL LTD
THERMAL RESEARCH

TECHNICAL BULLETIN

Heating Systems	September 20, 2007	Bulletin Identification No.: MTB-103-11
Release Type: Public		

Affected Model(s): OASIS CH50, H2, H2L, and HWH

Effective Date: September 20, 2007

Effective Serial Number: CH50X-XXXX-1583 (will include orifice internally)
H2XX-XXXX-1281 (will include orifice internally)
H2LX-XXXX-1093 (will include orifice internally)
HWHXX-XXXX-1082 (will include orifice internally)

Description: Fuel return restrictor

Part No. (Old): N/A

Part No. (New): 2333 (Orifice 0.07")

Short description of change:

If heaters prior to the above serial numbers are experiencing frequent flame faults and/or making popping sounds, add a restrictor (#2333, 0.07" orifice) to the fuel return line in order to create a positive fuel pressure on the regulator assuring a constant supply of fuel to the nozzle. The restrictor can, as show in the example below, be placed anywhere in the fuel return line close to the heater.



Figure 1: 0.07" Orifice

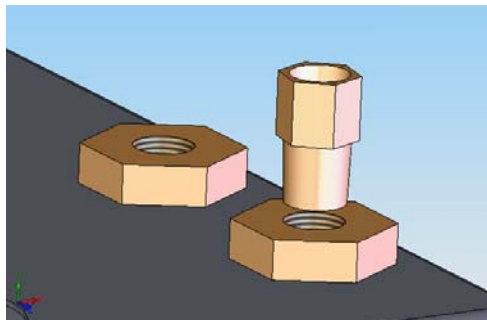


Figure 2: For example installed on fuel outlet.